

Rotary feeder RTB

The rotary feeder RTB (hereinafter referred to as feeder) is designed for the transport of loose, non-adhesive and non-combustible powder materials from the hoppers of precipitators and filters.

Description

The feeder consists of a welded cylindrical casing, a rotor with sealing bars and a worm gear unit with a motor. The rotor is mounted in rolling-contact bearings with a permanent filling of grease.

Operating conditions

The feeder is designed for closing of hoppers and containers, operating at underpressure or overpressure of up to 5 kPa and at the hopper area temperature of max. 150°C. The feeder may be used in working environment with the maximum temperature of +40°C.

Designation

Rotary feeder is designated:

RTB size / voltage specification

Example of designation with size of flange 160x160 mm and voltage 400 V:

RTB 160 / 400 V

Other specifications:

Finish undercoat

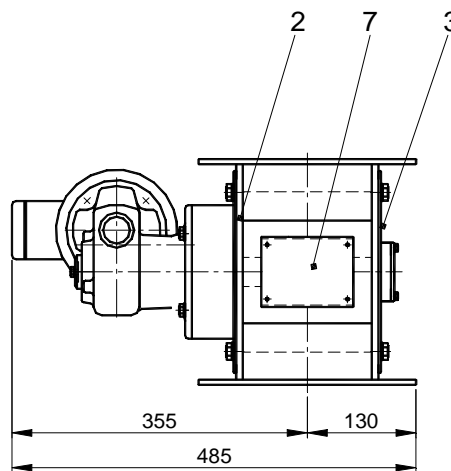
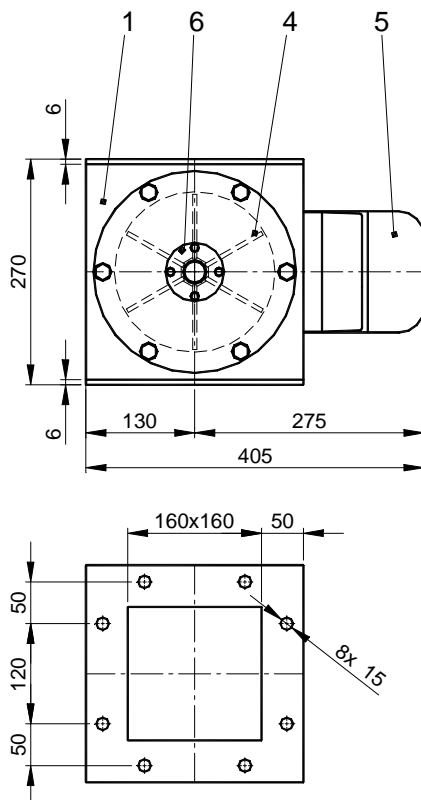
Finish undercoat + topcoat with RAL color

Technical data

Dimensions and weights

Feeder size	Weight [kg]
RTB 160	38,2

Basic dimensions



1. Casing
2. Cover of the gear unit
3. Bearing cover
4. Rotor
5. Gear box unit
6. Packing
7. Identification plate

Output parameters

Feeder size [mm]	Transported volume at 100% feeding [m ³ /hour]	Rotor diameter [mm]	Rotor speed [1/min]	Motor power input [kW]	Type of worm gear unit NORD
RTB 160	4	160	18	0,25	SK 2SM50AF - 71S/4

Valid from: 5.2.2014

Elaborated: Pavelka Petr