

Double butterfly valves KUA

The double butterfly valves KUA (hereinafter referred to as valves) are used for removing the loose powder materials from the hoppers of precipitators and filters. The valves are suitable for the transport of loose materials with higher abrasive effects.

Description

The valve casing is made of S235 material and consists of two hoppers.

The hoppers are closed with blades made of stainless steel.

The closing blades are seated in ball bearings and are controlled by an electric transmission.

The valve casing has a ground coat inside. The top coating depends on the operating conditions of the valve.

Operating conditions

The valves are intended for closing the hoppers and storage bins, working at the underpressure of 5 kPa and at the max. temperature of the hopper area of 250°C. They are not designed for closing hoppers operating in overpressure and for hoppers containing material that could create an explosive mixture with the air. The temperature of the outside environment must not exceed 40°C.

Designation

Double butterfly valve is designated:

KUA size / voltage specification

Example of designation with size of flange 400x400 mm and voltage 400 V:

KUA 400 / 400 V

Other specifications:

Finish undercoat

Finish undercoat + topcoat with RAL color

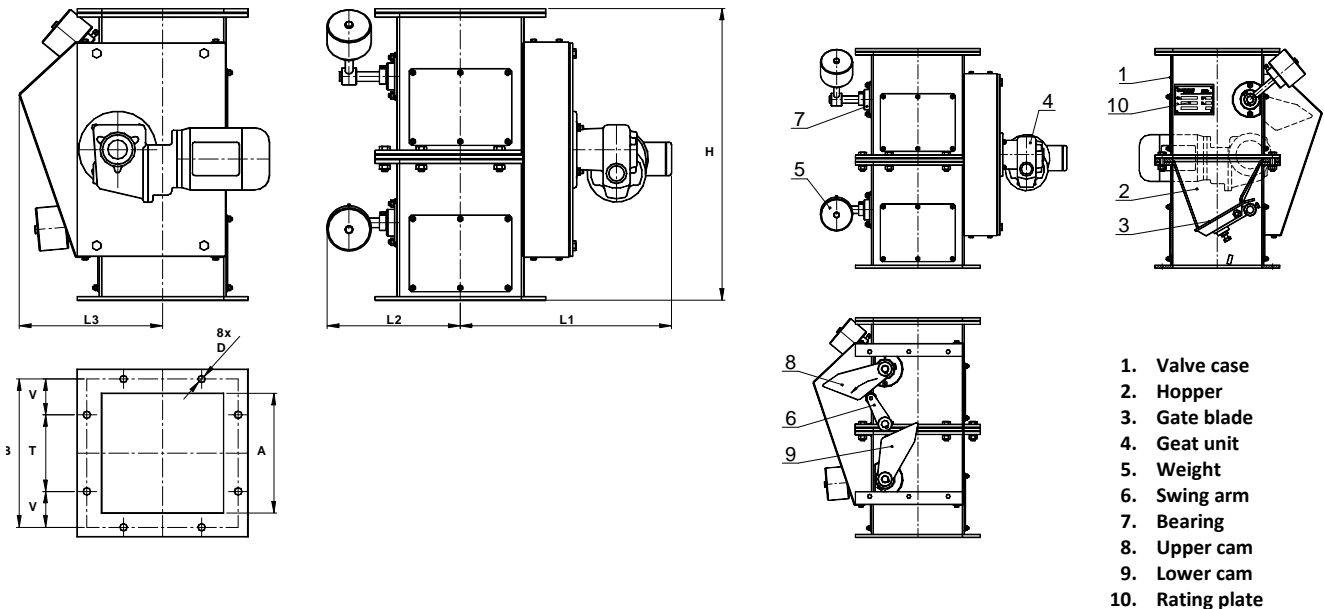
Preparing for speed sensor (specify size of the hole)

Technical data

Dimensions and weights

Valve size	A	B	T	V	Ø D	H	L1	L2	L3	Weight [kg]
KUA 200	200	260	160	50	15	492	385	240	260	79,9
KUA 250	250	310	160	75	15	610	420	275	300	106,3
KUA 315	315	385	200	92,5	19	752	525	335	360	174,6
KUA 400	400	470	200	135	19	702	565	355	493	230,8

Basic dimensions



Output parameters

Valve size [mm]	Volume output at 100% performance [m ³ /hour]	Electric motor		Output speed [1/min]	Type of worm gear unit NORD
		Power input[kW]	Speed [1/min]		
KUA 200	2,00	0,12	1330	13	SK 2SM40VF - 63S/4
KUA 250	4,00				
KUA 315	7,00	0,37	1360	11	SK 2SM63VF - 71L/4
KUA 400	10,00				

Valid from: 5.2.2014

Elaborated: Pavelka Petr