

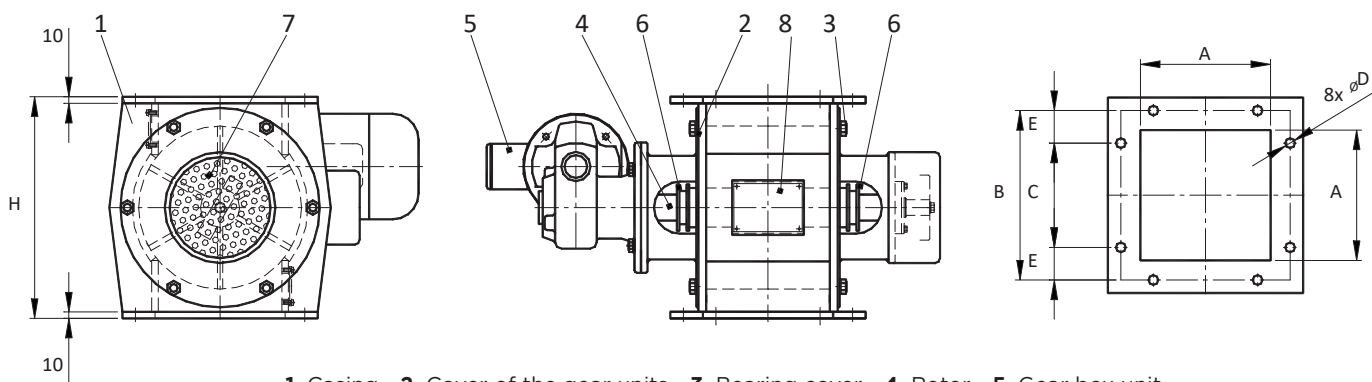
ROTARY FEEDERS

RTA

The rotary feeder is designed for conveying loose, non-adhesive and non-flammable pulverized materials from the hoppers of precipitators and filters. The feeder consists of a welded cylindrical casing; a rotor with sealing bars and a worm gearbox with electromotor of 400 V or 500 V supply voltage.

The rotary feeders are available in steel grade 11, for more demanding applications from abrasion-resistant HARDOX materials. It can be used for closing the hoppers and storage bunkers, operating at the underpressure or overpressure of 5 kPa and at the max. temperature of the hopper area of + 250 °C. The feeder can be used in a working environment with the maximum temperature of + 40 °C.

In standard version, they are surface- finished with undercoat + topcoat in RAL colour as per customer´s demand.



1. Casing - 2. Cover of the gear units - 3. Bearing cover - 4. Rotor - 5. Gear box unit
6. Packing - 7. Cover of the switch - 8. Identification plate

DIMENSIONS AND WEIGHTS

Feeder size	A [mm]	B [mm]	C [mm]	D [mm]	E [mm]	H [mm]	Weight [kg]
RTA 200	200	260	160	15	50	340	104,9
RTA 250	250	310	160	15	75	340	117,7
RTA 315	315	385	200	19	92,5	420	175,7

OUTPUT PARAMETERS

Feeder size	Transported volume at 100% feeding [m ³ /hour]	Rotor diameter [mm]	Rotor speed [1/min]	Motor power input [kW]	Type of worm gear unit NORD
RTA 200	10	250	23	0,75	SK12063 AZ-80 LP/4 TF
RTA 250	13				
RTA 315	27	315			

BASIC PARAMETERS

- Manufactured in 200, 250, 315, sizes
- Maximum temperature of transported material up to + 200 °C
- Electromotor-operated with gearbox; possible delivery with speed sensor
- Transmission capacity from 10 to 27 m³/ hour

Example of designation with 315x315 mm flange size and 400 V voltages: **RTA 315 / 400 V**