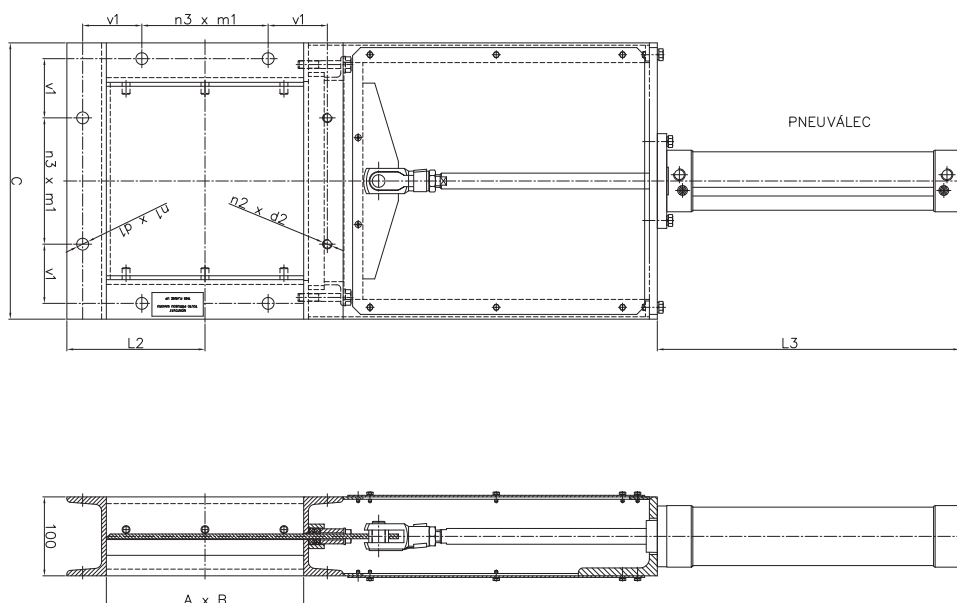


# SLIDE GATE SPD

The slide gate SPD is designed for closing the hoppers and storage bunkers with loose and non-adhesive pulverized materials. They are applied in places inaccessible to manual control. The slide gate control proceeds with a pneumatic cylinder. The air pressure for the pneumatic cylinder control is within the range of 4 to 6 bar. The power input of control valve makes 5 W.

The slide gate is made of rolled profiles with plate of 6 mm thick sheet. The plate is sealed to the environment with graphite packing and is guided in the slide gate frame by means of steel bars. The slide gates are available in steel grade 11, for more demanding applications from stainless steel materials. They are designed for closing the hoppers and storage bunkers with loose materials up to max. +150 °C. At customer's request, the basic dimensions of the slide gate can be adjusted. By using special sealing materials and paints it is possible to use the slide gate for higher temperatures.

In standard version, they are surface-finished with undercoat + topcoat in RAL colour as per customer's demand.



## DIMENSIONS AND WEIGHTS

A x B [mm]	C [mm]	L1 [mm]	L2 [mm]	L3 [mm]	n1xd1 [mm]	n2xd2	n3xm1 [mm]	v1 [mm]	Weight [kg]
200 x 200	300	498	150	333	6xØ15	2xM12	1x160	50	28,67
250 x 250	350	573	175	383	6xØ15	2xM12	1x160	75	35,01
315 x 315	415	691,5	207,5	459	6xØ19	2xM16	1x200	92,5	46,52
400 x 400	500	820	250	544	6xØ19	2xM16	1x200	135	58,91
500 x 500	600	970	300	644	9xØ19	3xM16	2x200	85	74,83

Example of designation with 200x200 mm flange size: **SPD 200**